



1929 Banks Road  
Margate, FL 33063 USA  
(954) 969-9500  
www.bluelinelabels.com

**FINISHED POUCH SIZE**

5" W x 5.5" H

**AI DOCUMENT SIZE**

5" H x 11" W

This is the size of the artboard in Illustrator.

**BLEED SETTINGS**

Top: 0.0"  
Bottom: 0.0"  
Left: 0.0787" (2mm)  
Right: 0.0787" (2mm)

File → Document Setup...

Do not add bleed measurements to overall document size.

**COLOR**

Your file must be in CMYK (Process), without RGB or spot colors (except the white ink spot color).

File → Document Color Mode → CMYK Color

All black must be 100% black (C0, M0, Y0, K100). Do not use [Registration] or rich black.

**TEXT**

All text in your file must be outlined.

Select → Object → All Text Objects

Type → Create Outlines

**IMAGES**

Embed all images in your file.

Images should be at least 300dpi.

**FINAL PDF SETUP**

Turn off all non-printing layers (templates, printer's marks, etc.)

File → Save As... → Adobe PDF

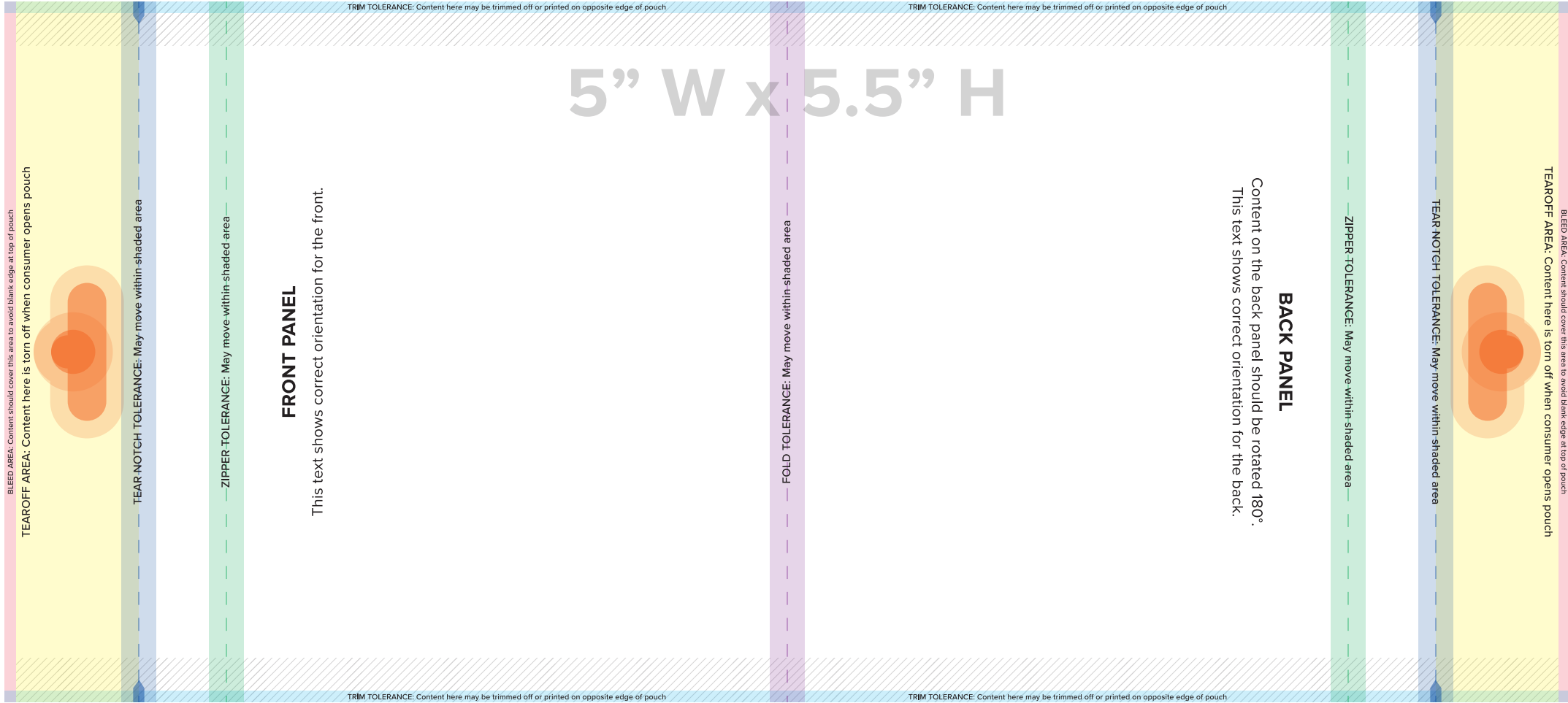
Adobe PDF Preset: [PDF/X-1a:2001]

Compatibility: Acrobat 7 (PDF 1.6)

Marks: Uncheck All Printer's Marks

Bleeds: Check Use Document Bleed Settings

**DO NOT RESIZE OR ROTATE THE ARTBOARD. THIS TEMPLATE IS SET UP TO BE PRINT-READY. PLACE YOUR CONTENT IN THE “ARTWORK” LAYER.**



**WARNING**

We recommend placing only a solid color or a seamless pattern within the trim tolerance area to avoid artwork printing on the opposite edge of the pouch.

Artwork placed inside the trim tolerance area will NOT warrant a reprint of your order.

**ORDERING CLEAR OR METALLIZED?**

Clear and metallized films may need a layer of white ink under your artwork.

Turn on the “Premium White” layer to see instructions for setting up your white layer.

**QUANTITY TOLERANCES**

Our production can vary ±10% of the quantity you order. We recommend padding your order to account for this.

If we ship less than your desired final quantity, a credit will be issued to your customer account.

If we ship more than your desired final quantity, the surplus is free of charge.